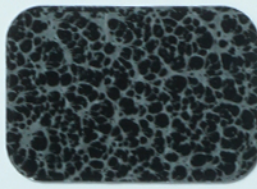




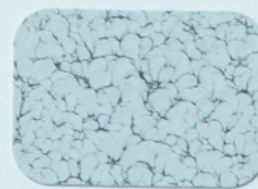
T375-BK07 \*  
Copper Vein



T375-BK10 \*  
Gold Vein



T375-BK26 \*  
Silver Vein



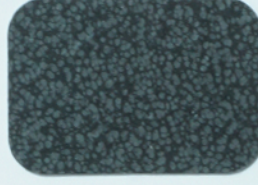
T075-WH34  
Black/White Vein



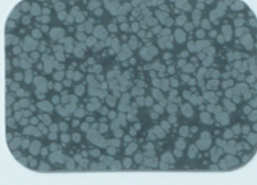
T075-BK211 ■  
Copper Vein Exterior



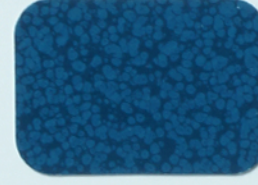
T064-BR24  
Bronze Hammertone



T064-GR660  
Gray Hammertone



T064-GR05  
Silver Hammertone



T064-BL95  
Blue Hammertone



T064-GN81  
Green Hammertone



T353-GR06 \*  
Silver Metallic 30 Gloss



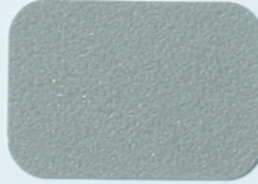
C356-GR1342 \*  
Silver Metallic 60 Gloss



T358-GR539 \*  
Chrome Metallic 80 Gloss



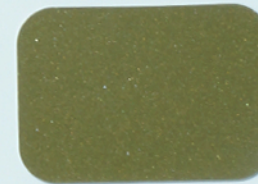
T357-GR105 \*  
Silver Metallic 70 Gloss



T391-BG290 \*  
Bronze Metallic Texture



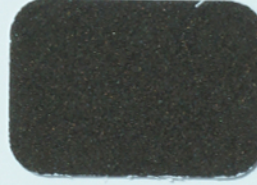
T391-GR1031 \*  
Silver Metallic Texture



T353-YL02 \*  
Brass Metallic 30 Gloss



T026-BR340 ■  
Statuary Bronze 60 Gloss



T291-BR251 ■  
Oil Rubbed Bronze Texture



T022-BR189 ■  
Oil Bronze 20 Gloss



C292-GR494 ■  
Steel Gray Texture



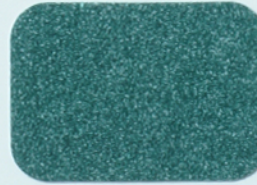
T028-GR02 ■  
Steel Gray 80 Gloss



T025-BR01 ■  
Bronze 50 Gloss



T091-GR309  
Mock Rock Texture



C291-GN20  
Patina Texture



T091-GN57  
Verdigris Texture



T091-BR47  
Rust Texture

If a clear topcoat finish is required or preferred.

T209-CL01 90 Gloss Clear Polyester TGIC

T002-CL02 20 Gloss Clear Polyester TGIC

T909-CL05 90 Gloss Superdurable Clear Polyester TGIC

\* To maintain the appearance of exterior metallic finishes a clear topcoat is recommended.

\*\* It is suggested that these products be applied as a topcoat to interior products only.

■ Product exhibiting a metallic appearance and formulated for exterior use without requiring a clear topcoat.